



GLUMA® 2Bond & GLUMA® Self Etch
Strong bonding for life.

Giving a hand to oral health.



KULZER
MITSUI CHEMICALS GROUP

GLUMA®

Strong bonding for life.

There for you – Nearly 30 years of experience in developing safe and comfortable adhesives.

For adhesive restorations your patients rely on your choice of material to be long-lasting. And you want to rely on a strong and effective adhesive.

GLUMA is your best choice in terms of bond strength and adhesion. Its excellent handling qualities will make your everyday challenges easier. And by the way, GLUMA's outstanding bond strength and handling qualities have been confirmed in numerous clinical studies.

We are proud to say that years of experience and development have culminated in the knowledge: GLUMA Bondings cover all your needs for an adhesive system.

Your patients' satisfaction is our objective.

We want your patients to realise the excellent work you do every day. That is why we support your work with products that meet your requirements. GLUMA from Kulzer is a distinguished brand with a long and successful history: for nearly 30 years, GLUMA products have covered almost all bonding generations and have supplied dentists all over the world with a wide range of reliable and highly effective adhesives for direct and indirect restorations.

Your patients will feel it immediately: the modern GLUMA products contain the unique and well-known desensitising effect. It reduces or prevents post-operative sensitivity after the preparation or restoration of teeth.

► GLUMA – the perfect adhesives for all needs!



Precision right down ...

GLUMA – More precise, more economical – with drop control.

Have you and your assistant ever complained about drop running down the dropper, jamming the cap? That becomes a thing of the past with our newly designed dropper for bonding agents and desensitizers. The notched design ensures a better cut of the drop.

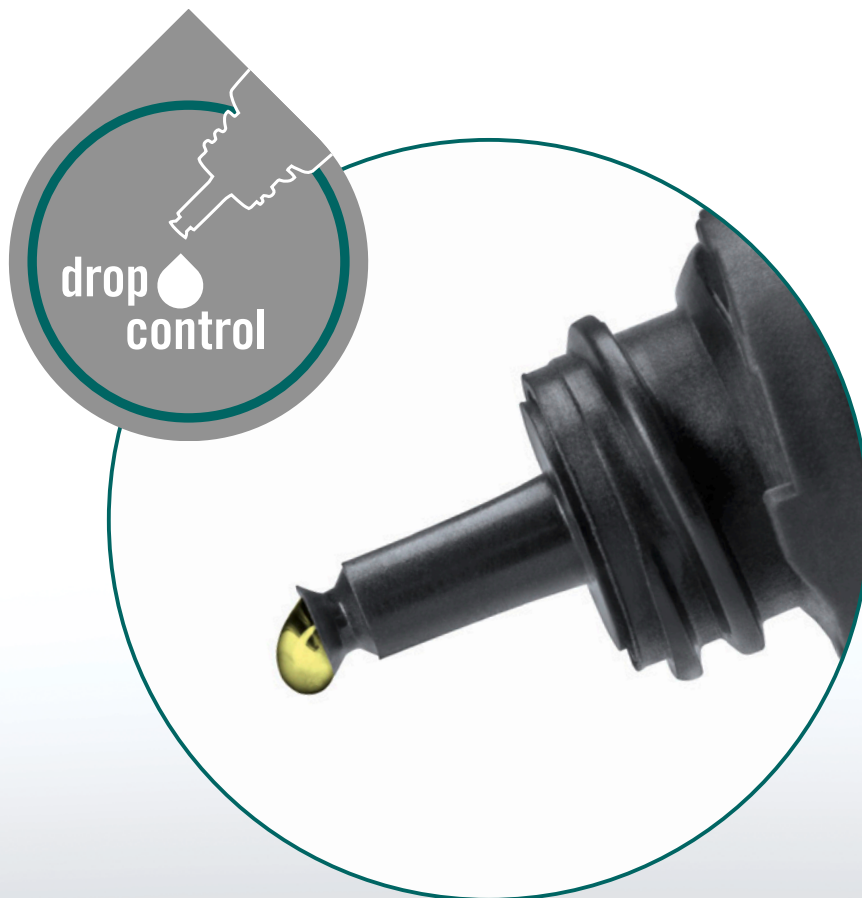
This not only prevents drops from running down the bottle. The new drop control entails several other benefits:

- No jamming or soiling of the opening.
- A very precise output of bonding agent: Depending on the applied pressure, you can produce a smaller or bigger drop – always with a clean cut.
- The amount of single drops goes up to 220 per bottle – saving you about 50 drops per bottle.

Our quality seal: It cracks with the first opening

Every bottle of bonding agent and desensitizer now also comes with a quality seal, that cracks when you first open it. This seal tells you that the bottle fulfils our quality standards and is untapped.

It is always our aim to make your daily business more convenient and efficient. You will quickly come to appreciate the precise drop control and the opening protection. Why not enjoy the comfort of quality material in well-thought packaging?



GLUMA® 2Bond

Adhesive convenience.

Effective adhesive plus desensitiser.

Based on our long-term bonding expertise, we developed the Etch & Rinse adhesive system GLUMA 2Bond to meet your everyday requirements for uncomplicated and state-of-the-art bonding.

With GLUMA 2Bond, you have:

- **More efficiency**
Due to the special formula, GLUMA 2Bond necessitates only one layer for priming, bonding and desensitising.
- **More security**
GLUMA 2Bond provides excellent bond strength and ideal marginal sealing due to its innovative chemistry.
- **More reliability**
Numerous studies and tests have confirmed the bonding qualities of GLUMA 2Bond.
- **More convenience**
GLUMA 2Bond is a ready-to-use, one-bottle system. Simple application without prior mixing or shaking.

With GLUMA 2Bond, patients benefit from:

- **Less irritation**
The GLUMA Desensitizer inside reduces post-operative sensitivity.
- **Less preparation time**
GLUMA 2Bond is immediately effective.
- **Less sensitivity**
GLUMA 2Bond can be used to seal hypersensitive areas of the teeth.

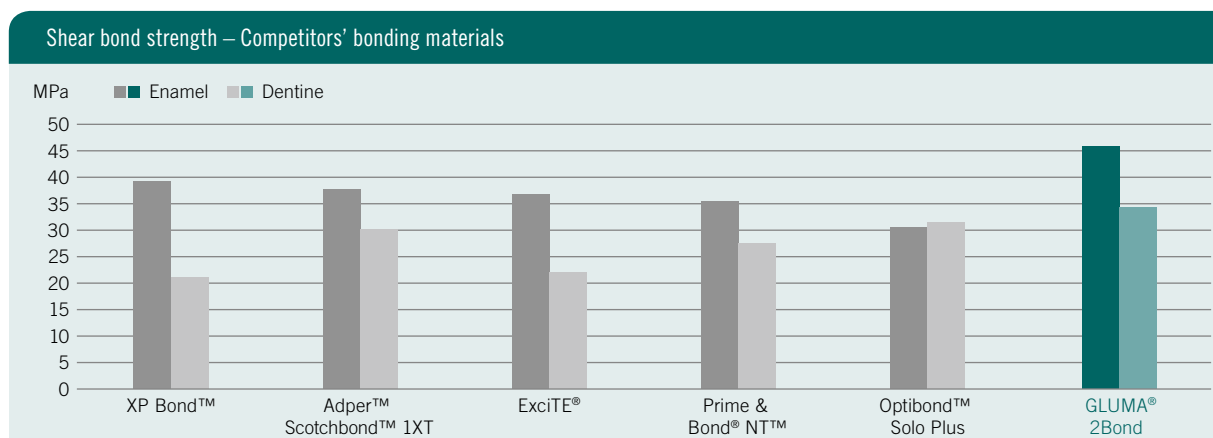
► GLUMA – the perfect adhesives for all needs!



GLUMA® 2Bond

Excellent results in clinical studies.

GLUMA 2Bond – Excellent bond strength with the GLUMA 2Bond technique.



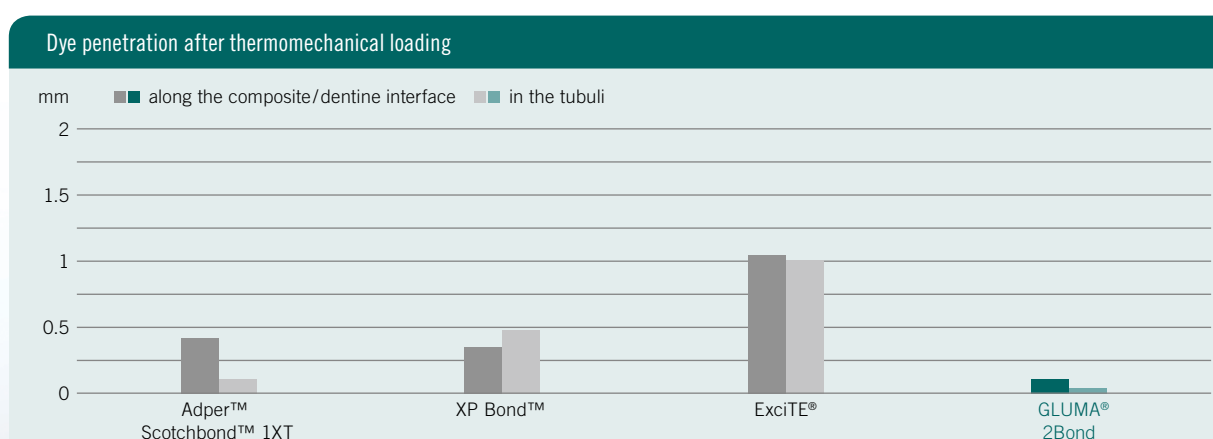
Source: Kulzer GmbH, R&D Bondings, Wehrheim, Germany.

► GLUMA 2Bond shows highest bond strength in this test

Due to its bond strength, GLUMA 2Bond is suitable for every type of restoration. GLUMA 2Bond produces excellent adhesion to the enamel and the dentine, as well as an optimal marginal sealing. Furthermore, GLUMA 2Bond contains the GLUMA Desensitizer agent, a glutardialdehyde product which has been confirmed clinically successful for more than 10 years. GLUMA 2Bond is ideal for sensitive patients or the desensitisation of hypersensitive tooth areas.

GLUMA 2Bond – More than 100 dentists in Europe have already tested and rated GLUMA 2Bond

- 96 % of dentists rated GLUMA 2Bond as easy to use.
- 87 % of dentists would recommend GLUMA 2Bond to their colleagues.
- 75 % of dentists rated GLUMA 2Bond as their preferred Etch & Rinse bonding agent.



Source: Prof. Haller, University Hospital, Ulm, Germany. Unpublished data. Documentation available. GLUMA 2Bond is equivalent with tested product.

► GLUMA 2Bond reveals outstanding marginal sealing

GLUMA® 2Bond

Convenient and easy handling.

GLUMA 2Bond – One layer for priming, bonding and desensitising.

The handling of GLUMA 2Bond is uncomplicated and easy: after etching with GLUMA Etch and following rinsing, the effective cross-linking of adhesive and dental surfaces. Because of its new formula and special viscosity, GLUMA 2Bond remains stationary on the tooth. The result is a homogeneous, glossy layer on the enamel and the dentine – the guarantee for an excellent, durable restoration.

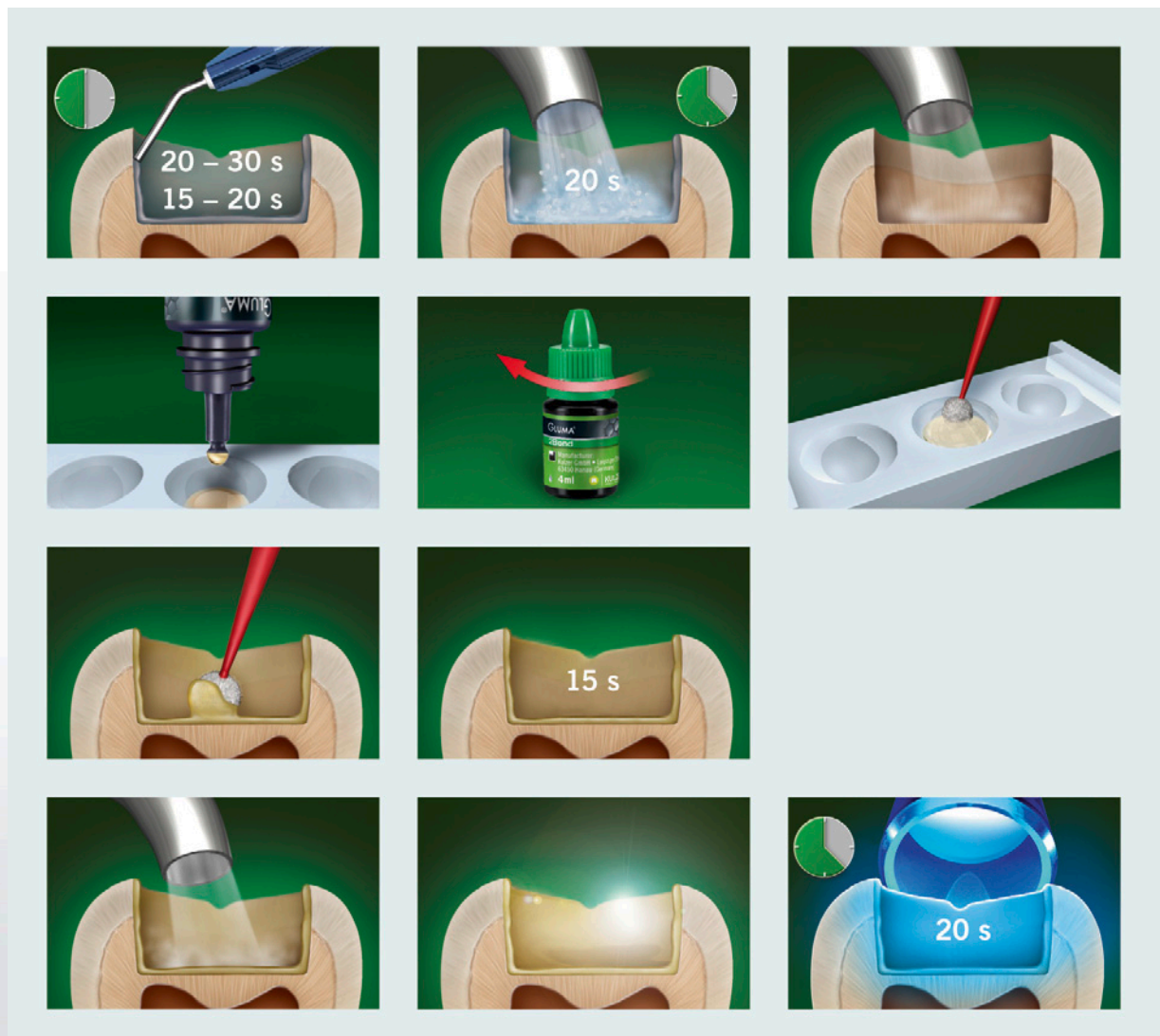
Broadly applicable

GLUMA 2Bond is the first-choice bonding system for almost all everyday indications.

It is ideal for

- Adhesive fixing of direct composite and compomer restorations.
- Adhesive fixing of indirect laboratory-fabricated ceramic and composite restorations (inlays, onlays, veneers and crowns).
- Treatment of hypersensitive tooth regions.

GLUMA 2Bond – Step-by-step application



GLUMA® Self Etch

One step ahead.

Effective adhesive plus desensitiser.

Based on our long-term bonding expertise, we developed the new self-adhesive system GLUMA Self Etch. This product meets your everyday requirements and demonstrates all characteristics which are important for an uncomplicated and state-of-the-art bonding agent.

With GLUMA Self Etch, your patients benefit from:

- **One Step – reliability**

The reliability and qualities of GLUMA Self Etch has been confirmed by many studies and test results. The innovative formula of GLUMA Self Etch supports the excellent bond strength and supreme marginal sealing.

- **One Step – effectiveness**

GLUMA Self Etch allows you to apply just one layer for etching, priming, bonding plus desensitising.

- **One Step – safety**

The chemistry of GLUMA Self Etch allows you maximum error-avoiding application, even treating hyperactive patients.

- **One Step – convenience**

GLUMA Self Etch is a ready-to-use one-step adhesive.

No prior mixing, no shaking, no etching, no fridge storage is necessary.

With GLUMA Self Etch, your work benefits from:

- **Minimum preparation time**

GLUMA Self Etch system is immediately effective.

- **Minimum failures**

Just one application step which avoids unexpected treatment failures.

- **Minimum sensitivity**

The GLUMA Self Etch formula allows treatments even in hypersensitive areas.

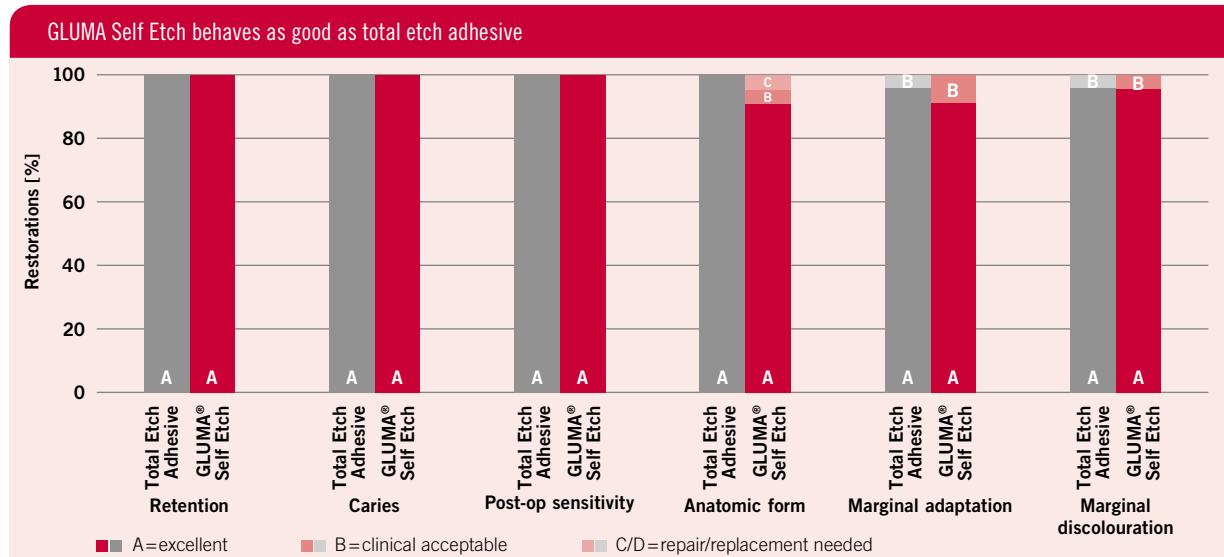
► GLUMA – the perfect adhesives for all needs!



GLUMA® Self Etch

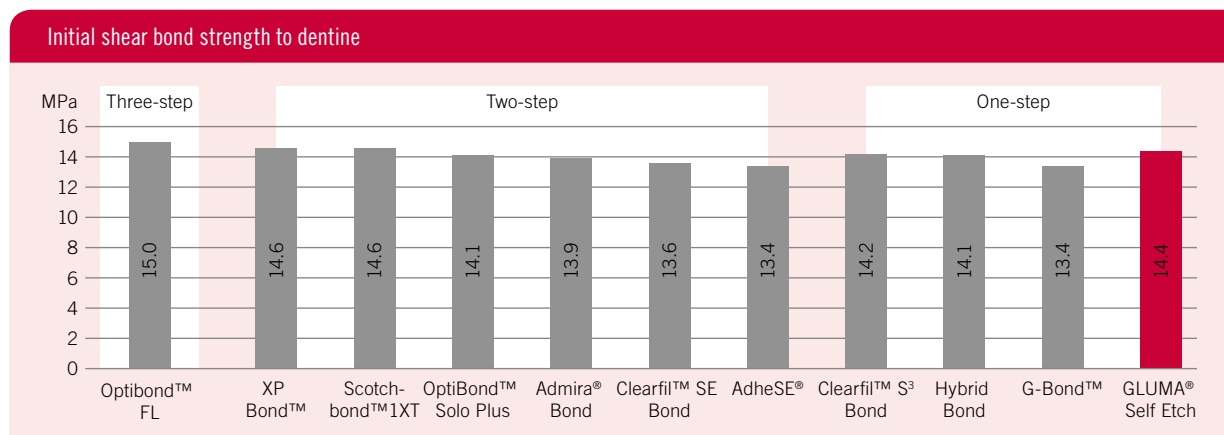
Excellent results in clinical studies.

GLUMA Self Etch – Exceptional clinical results.



5years data: Lee L, University of Loma Linda, Loma Linda, USA, test report. Unpublished data. Data on file. Publication of 4-years report: Lee SS, Meharry M, Arambula M, Lee DH, Li Y: A 48-Month Clinical Evaluation. J Dent Res 91 (Spec Iss B): 706, 2012

► GLUMA Self Etch possesses excellent clinical long-term performance



Source: Degrange M, University of Paris, France 2007. Documentation available. GLUMA Self Etch is equivalent to the tested product.

► Dentine bond strength of GLUMA Self Etch is on the same level as a 3-step adhesive

GLUMA Self Etch, the 7th generation all-in-one bonding agent that etches, primes, bonds and desensitises in one single step. With numerous scientific studies and based on our long-term bonding expertise, GLUMA Self Etch combines high bond strength, improved marginal sealing and virtually no post-operative sensitivity with an easy, fast and more convenient application.

GLUMA Self Etch is applicable for all types of restorations, direct and indirect. Due to the very fast application time, it is ideally suited for treatment of children or hyperactive patients.

GLUMA Self Etch – Over 500 dentists in Europe have already used GLUMA Self Etch in more than 73,000 restorations*

- 95 % of dentists rated GLUMA Self Etch as easy to use.
- 86 % of dentists rated GLUMA Self Etch as better than their current bonding system.
- 93 % of dentists would recommend GLUMA Self Etch to their colleagues.

* GLUMA Self Etch field test involving dentists in Germany, Great Britain, Italy and France. Data available from the manufacturer.

GLUMA® Self Etch

Convenient and easy handling.

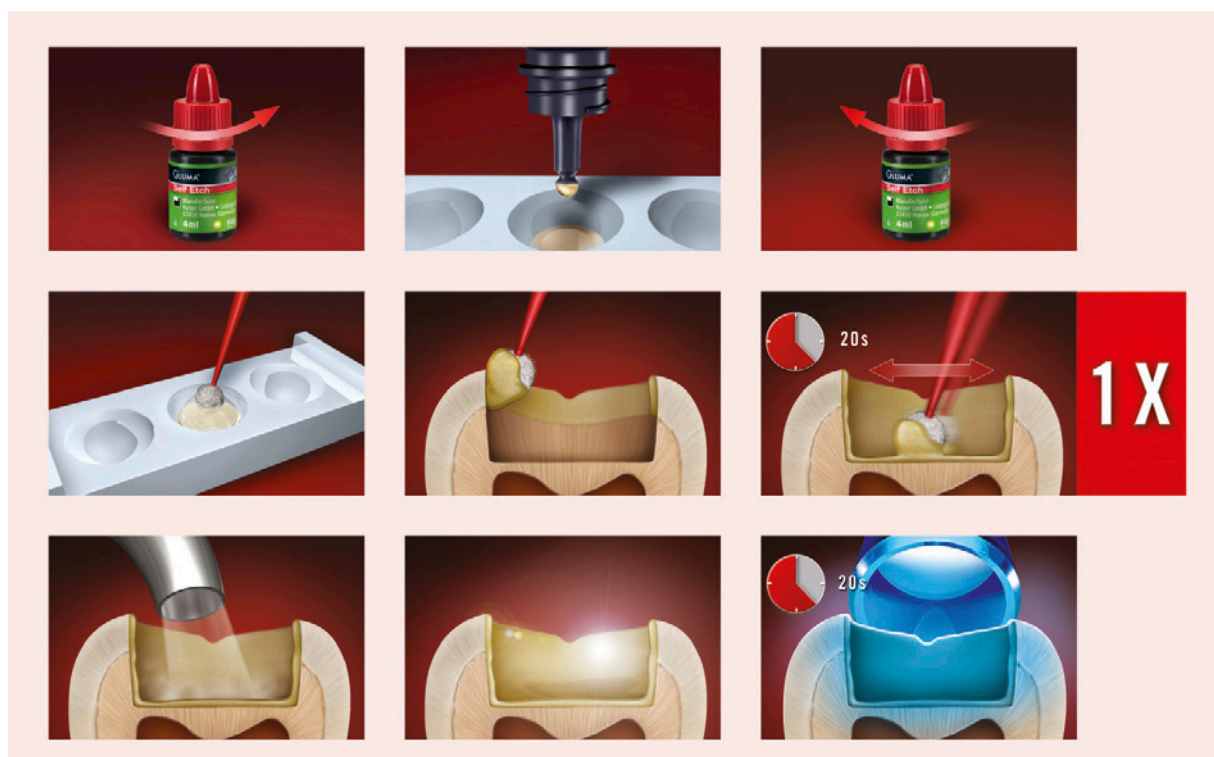
GLUMA Self Etch – Etching, priming and bonding in only one step with a desensitising effect!

GLUMA Self Etch is applied in only one step. A shiny surface is easily achieved by air drying and provides the base for outstanding, durable restorations. The excellent stability of GLUMA Self Etch allows storage at room temperature.

Indications for GLUMA Self Etch:

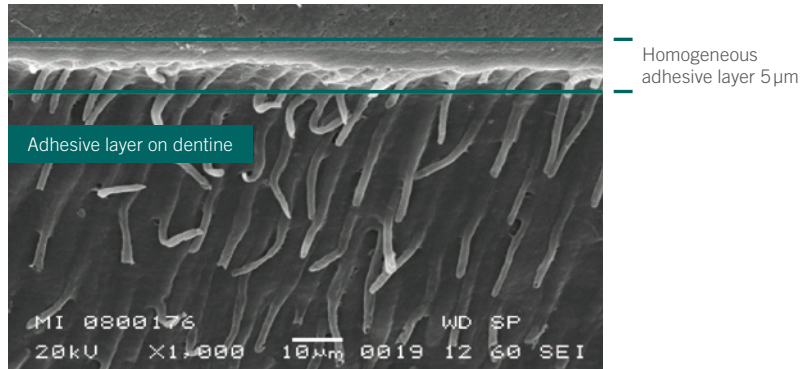
- Bonding of direct light-cured composite restorations (including compomers).
- Bonding indirect restorations in combination with a light-curing luting cement: porcelain and composite restorations (inlays, onlays, veneers, crowns).
- Treatment of hypersensitive tooth regions.

GLUMA Self Etch – Step-by-step application



GLUMA 2Bond –

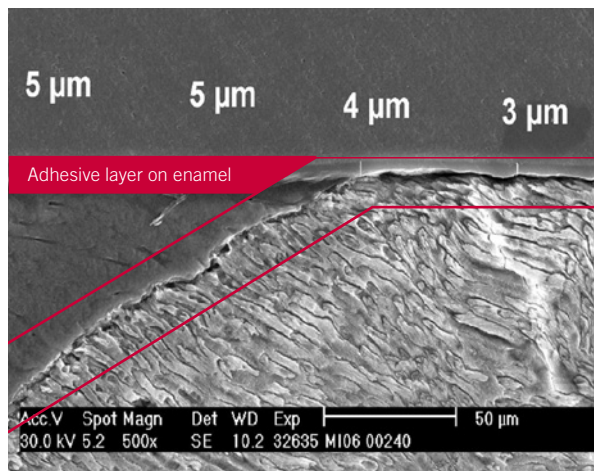
Easy, convenient bonding with the confirmed
two-step technique!



The homogenous adhesive layer formed by GLUMA 2Bond in
an SEM photograph at 500x magnification.

GLUMA Self Etch –

Easy, convenient bonding with the confirmed
one-step technique!



The homogenous adhesive layer formed by GLUMA Self Etch
in an SEM photograph at 500x magnification.

GLUMA®

Product range.

GLUMA Self Etch

GLUMA Self Etch Bottle Refill

1 x 4 ml Bottle

50 Application Tips, Mixing Well, Pictorial Card

Art.-No.: 66046246

GLUMA Self Etch Bottle Value Pack

3 x 4 ml Bottle

Pictorial Card

Art.-No.: 66046247



GLUMA 2Bond

GLUMA 2Bond Bottle Refill

1 x 4 ml Bottle

50 Application Tips, Mixing Well, Pictorial Card

Art.-No.: 66040972

GLUMA 2Bond Bottle Assortment

1 x 4 ml Bottle

50 Application Tips, Mixing Well, Pictorial Card

2 x 2.5 ml Syringes GLUMA Etch 35 Gel, 25 Cannulas

Art.-No.: 66040973

GLUMA 2Bond Bottle Value Pack

3 x 4 ml Bottle

Pictorial Card

Art.-No.: 66040971



GLUMA Etch

GLUMA Etch 35 Gel

2 x 2.5 ml Syringes

25 Cannulas

Art.-No.: 66000130



Charisma® composites

Discover the creation of natural beauty.

Welcome to the simplicity and quality of natural restorations

- **Charisma Diamond:**

This nano-hybrid composite expands the boundaries of aesthetics, quality and performance thanks to its innovative formula. What else do you expect from state of the art?

- **Charisma Topaz:**

Charisma Topaz is a light-curing, radiopaque nano-hybrid composite that features our unique TCD matrix. This innovative formula combined with the approved easy Charisma handling works as the foundation for down-to-earth restorations of natural beauty.



New address as of 01 July 2017:

KULZER GmbH
Leipziger Straße 2
63450 Hanau
Germany



Contact in Germany

Heraeus Kulzer GmbH
Grüner Weg 11
63450 Hanau, Germany
info.dent@kulzer-dental.com

OptiBond™ FL and OptiBond™ Solo Plus are trademarks of Kerr Corporation • XP Bond™ and Prime & Bond® NT™ are trademarks of Dentsply DeTrey GmbH • Adper™ Scotchbond™ 1 XT is a trademark of 3M Company • Admira® Bond is a trademark of Voco GmbH • Clearfil™ SE Bond and Clearfil™ S3 Bond are trademarks of Kuraray Co. Ltd. • AdheSE® and Excite® are trademarks of Ivoclar Vivadent, Inc. • G-Bond™ is a trademark of GC America